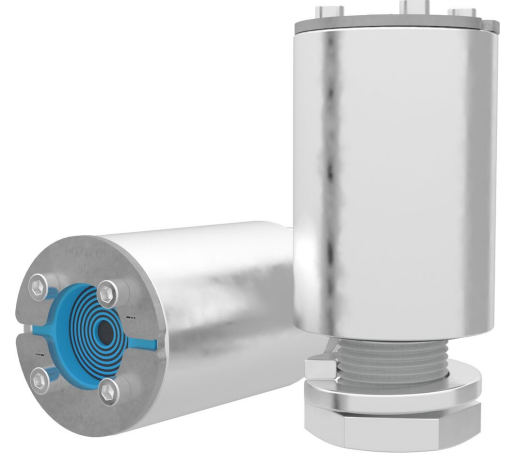




SLA özellikli Roxtec RS yalıtım malzemesi

Panç ile açılan deliklere takmak için uyarlama manşonlu (zıvanalı) kablo yalıtım malzemesi.

SLA ile Roxtec RS, tek kablolar için metal manşonlu (zıvana) yalıtım malzemesidir. Giriş yalıtım malzemesinin soyulabilir katmanlı iki parçadan oluşur ve bu sayede farklı ölçülerdeki kablolarla uyandırabilir. Manşon (zıvana) dişlidir ve kontra somunlu bir yapıya takılıdır.



- Yüzeyi verimli kullanır
- Yenileme için mükemmel
- Hızlı ve kolay montaj

Ürün özellikleri



Yangın sınıflamalı



Su geçirmez

Montaj yapılacak yapı



Metal

Montaj tipi



Cıvatalama

Derecelendirmeler ve sertifikalar

Yangın

- IMO 2010 FTP Koduna göre A-SINIFI

Sızdırmazlık

- Su: 2,5 bar (katastrofik)

Yalıtım elemanı verileri

Yalıtım elemanları



SLA RS kit



RS yalıtım malzemesi



Kayganlaştırıcı

Ayrıntılı bilgi için lütfen [roxtec.com](https://www.roxtec.com) adresini ziyaret edin.



Önceden yapılandırılmış geçiş kitleri

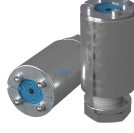
mm/kg



SLA RS 100 AISI316



SLA RS 50 AISI316



SLA RS 50 GALV



SLA RS 100 GALV



SLA RS 25 GALV



SLA RS 75 GALV



SLA RS 75 AISI316



SLA RS 25 AISI316

Başlık	Konfigürasyon	Açıklık boyutları Ø	Ağırlık	Madde Numarası
SLA RS 100 AISI316	1x (48.0-53.0)	80 - 85	2.9	164404
SLA RS 50 AISI316	1x (8.0-25.0)	34 - 40	1.1	164388
SLA RS 50 GALV	1x (8.0-25.0)	34 - 40	1.1	164389
SLA RS 100 GALV	1x (48.0-53.0)	80 - 85	2.9	164405
SLA RS 25 GALV	1x (3.6-12.0)	21 - 22	0.28	164387
SLA RS 75 GALV	1x (24.0-34.0)	42 - 49	1.8	164397
SLA RS 75 AISI316	1x (24.0-34.0)	42 - 49	1.8	164396
SLA RS 25 AISI316	1x (3.6-12.0)	21 - 22	0.28	164386

The product information provided by Roxtec does not release the purchaser of the Roxtec system, or part thereof, from the obligation to independently determine the suitability of the products for the intended process, installation and/or use.

Roxtec gives no guarantee for the Roxtec system or any part thereof and assumes no liability for any loss or damage whatsoever, whether direct, indirect, consequential, loss of profit or otherwise, occurred or caused by the Roxtec systems or installations containing components not manufactured by an authorized manufacturer and/or occurred or caused by the use of the Roxtec system in a manner or for an application other than for which the Roxtec system was designed or intended.

Roxtec expressly excludes any implied warranties of merchantability and fitness for a particular purpose and all other express or implied representations and warranties provided by statute or common law. User determines suitability of the Roxtec system for intended use and assumes all risk and liability in connection therewith. In no event shall Roxtec be liable for indirect, consequential, punitive, special, exemplary or incidental damages or losses.

The Roxtec products are offered and sold in accordance with the conditions of the Roxtec General Terms of Sales. The latest version of the Roxtec General Terms of Sales can be downloaded from <https://www.roxtec.com/en/about-us/about-roxtec/general-terms-of-sales/>

We reserve the right to make changes to the product and technical information without further notice. Any errors in print or entry are no claims for indemnity. The content of this publication is the property of Roxtec International AB and is protected by copyright.

This document was generated on: 2024-04-23